



Communauté de communes

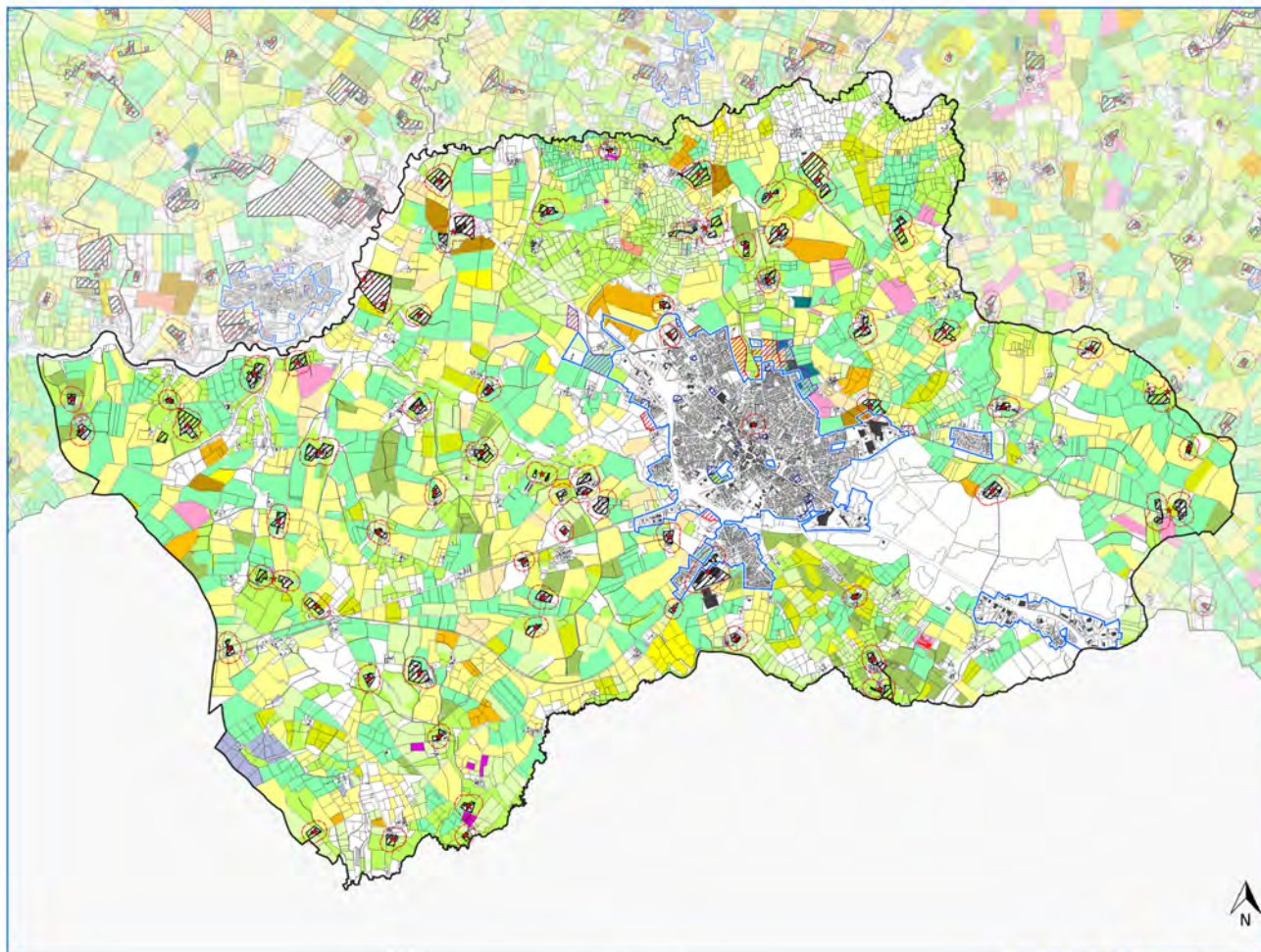
Vie et Boulogne PLUi-H

PLAN LOCAL D'URBANISME INTERCOMMUNAL ET HABITAT

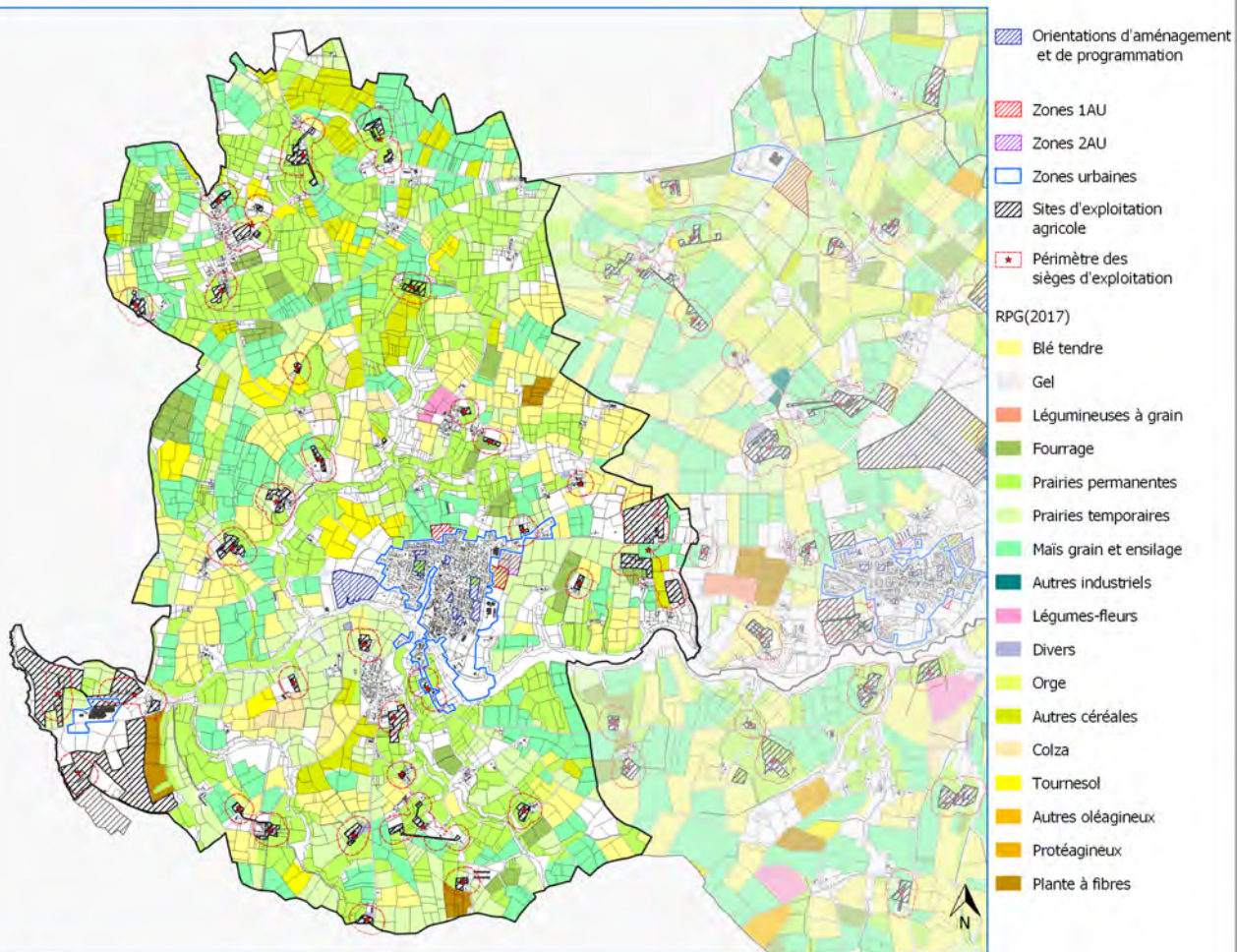
RAPPORT DE PRESENTATION

TOME 5 – JUSTIFICATION DES CHOIX

ANNEXE – IMPACT AGRICOLE



-  Orientations d'aménagement et de programmation
-  Zones 1AU
-  Zones 2AU
-  Zones urbaines
-  Sites d'exploitation agricole
-  Périmètre des sièges d'exploitation
- RPG(2017)
-  Blé tendre
-  Gel
-  Légumineuses à grain
-  Fourrage
-  Estives landes
-  Prairies permanentes
-  Prairies temporaires
-  Mais grain et ensilage
-  Vergers
-  Vignes
-  Autres industriels
-  Légumes-fleurs
-  Divers
-  Orge
-  Autres céréales
-  Colza
-  Tournesol
-  Autres oléagineux
-  Protéagineux
-  Plante à fibres



Orientations d'aménagement et de programmation

Zones 1AU

Zones 2AU

Zones urbaines

Sites d'exploitation agricole

Périmètre des sièges d'exploitation

RPG(2017)

Blé tendre

Gel

Légumineuses à grain

Fourrage

Prairies permanentes

Prairies temporaires

Mais grain et ensilage

Autres industriels

Légumes-fleurs

Divers

Orge

Autres céréales

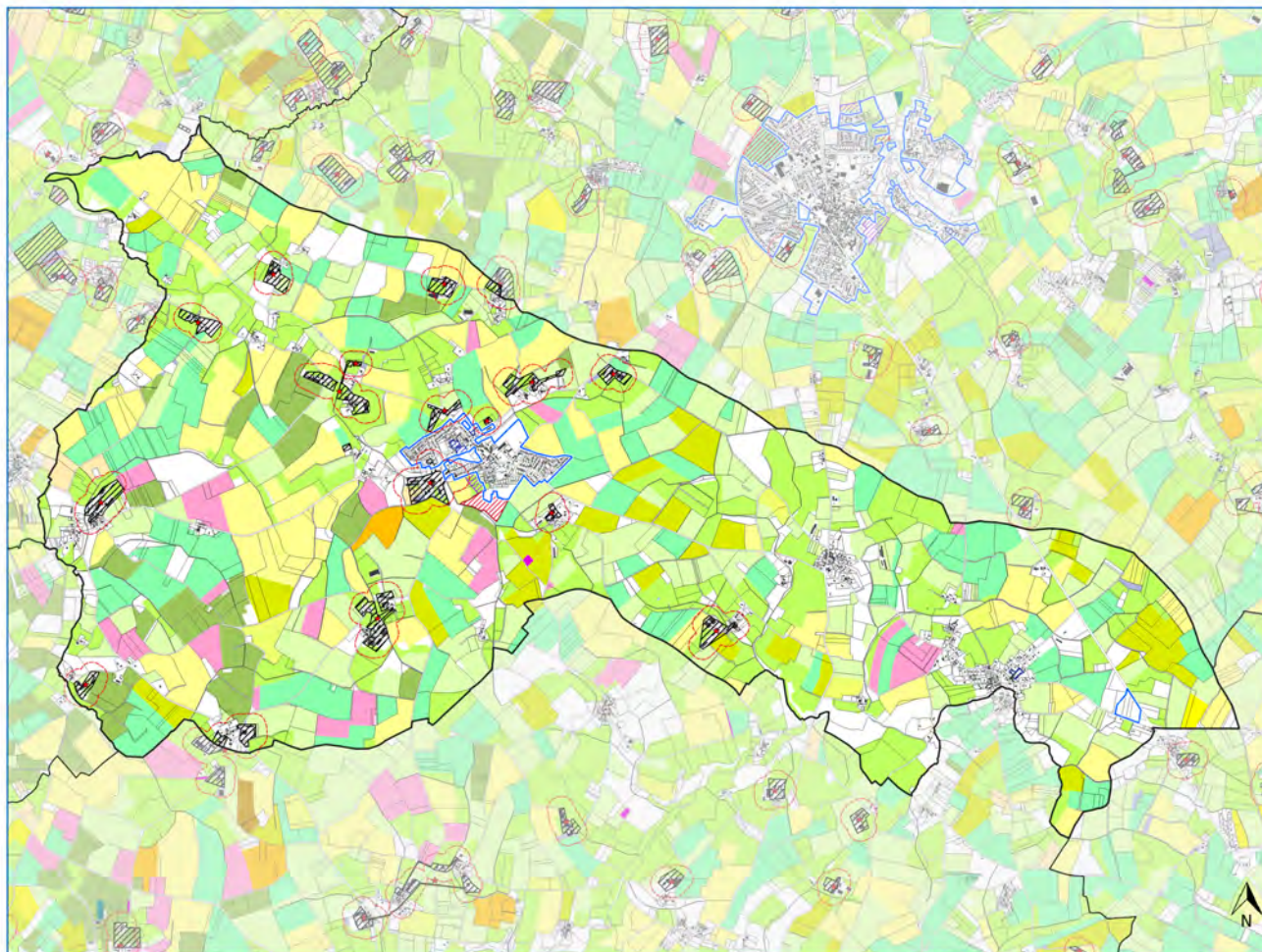
Colza


























Tournesol

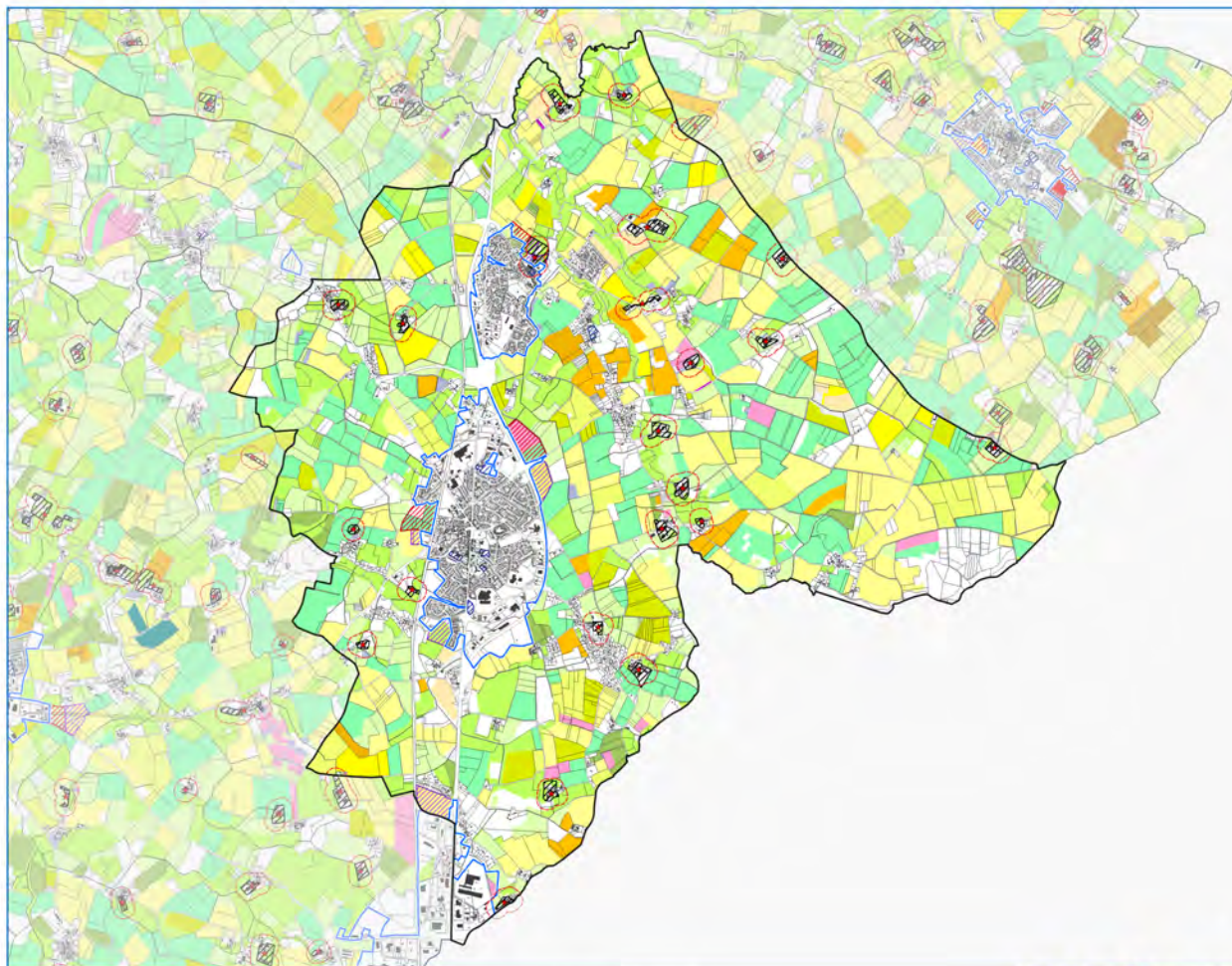
Autres oléagineux


























Protéagineux

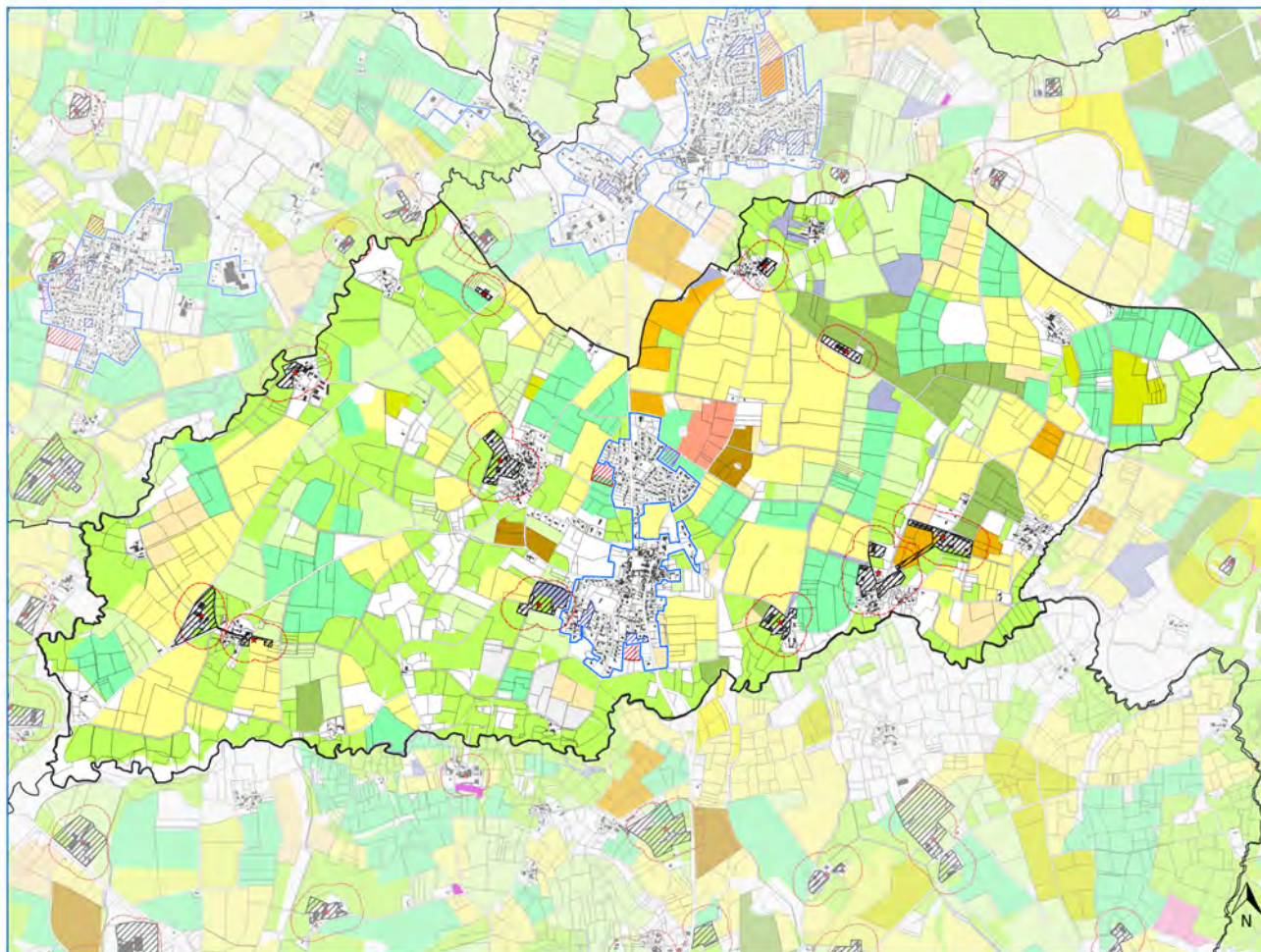
Plante à fibres



-  Orientations d'aménagement et de programmation
-  Zones 1AU
-  Zones 2AU
-  Zones urbaines
-  Sites d'exploitation agricole
-  Périmètre des sièges d'exploitation
- RPG(2017)
-  Blé tendre
-  Gel
-  Fourrage
-  Estives landes
-  Prairies permanentes
-  Prairies temporaires
-  Maïs grain et ensilage
-  Vignes
-  Fruits à coques
-  Autres industriels
-  Légumes-fleurs
-  Divers
-  Orge
-  Autres céréales
-  Colza
-  Tournesol
-  Autres oléagineux
-  Protéagineux
-  Plante à fibres



-  Orientations d'aménagement et de programmation
 -  Zones 1AU
 -  Zones 2AU
 -  Zones urbaines
 -  Sites d'exploitation agricole
 -  Périmètre des sièges d'exploitation
- RPG(2017)
-  Blé tendre
 -  Gel
 -  Fourrage
 -  Estives landes
 -  Prairies permanentes
 -  Prairies temporaires
 -  Maïs grain et ensilage
 -  Vergers
 -  Vignes
 -  Autres industriels
 -  Légumes-fleurs
 -  Divers
 -  Orge
 -  Autres céréales
 -  Colza
 -  Tournesol
 -  Autres oléagineux
 -  Protéagineux
 -  Plante à fibres



Orientations d'aménagement et de programmation

Zones 1AU

Zones 2AU

Zones urbaines

Sites d'exploitation agricole

Périmètre des sièges d'exploitation

RPQ(2017)

Blé tendre

Gel

Légumineuses à grain

Fourrage

Prairies permanentes

Prairies temporaires

Mais grain et ensilage

Vignes

Légumes-fleurs

Divers

Orge

Autres céréales

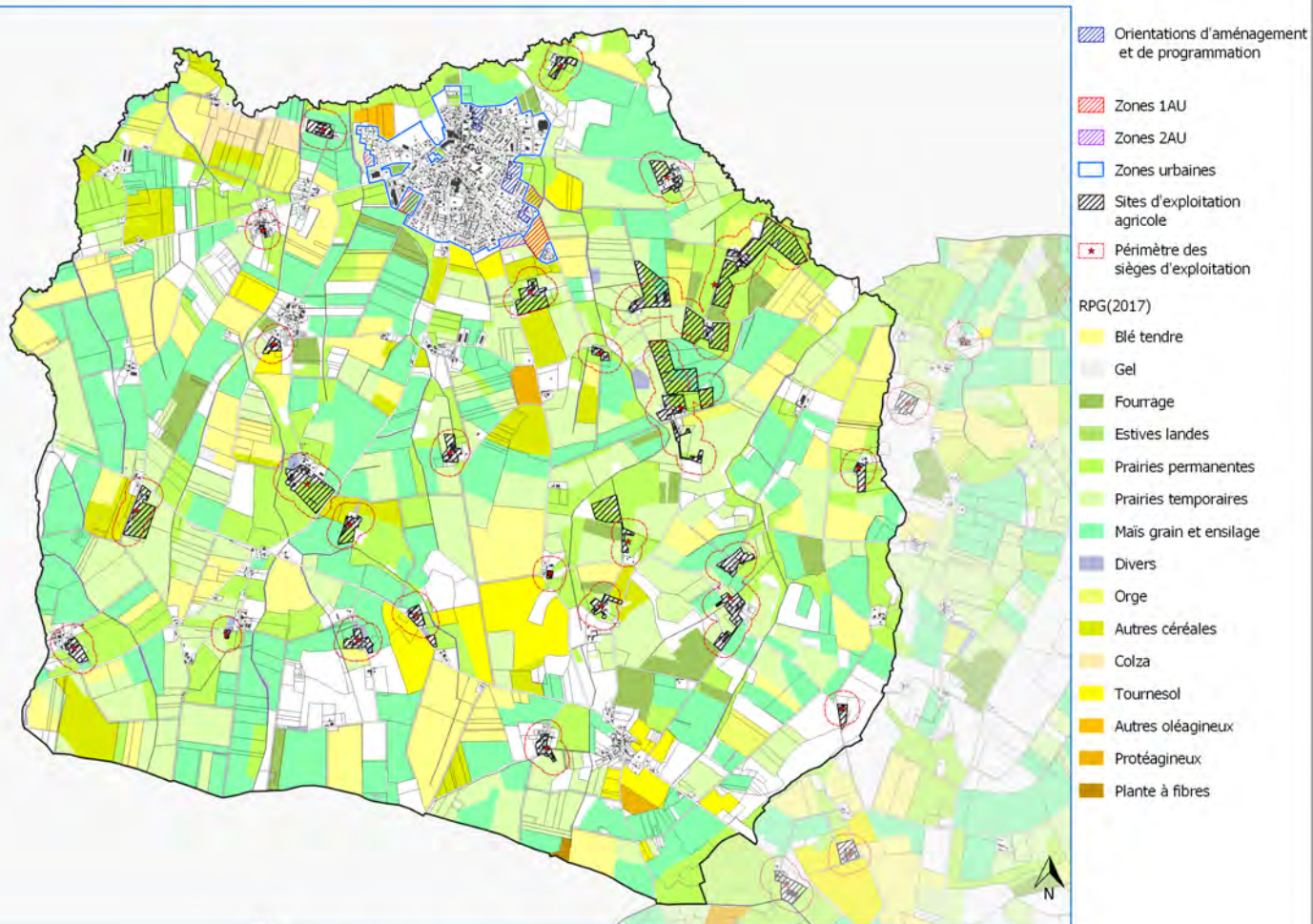
Colza

Tournesol

Autres oléagineux

Protéagineux

Plante à fibres



Orientations d'aménagement et de programmation

Zones 1AU

Zones 2AU

Zones urbaines

Sites d'exploitation agricole

Périmètre des sièges d'exploitation

RPQ(2017)

Blé tendre

Gel

Fourrage

Estives landes

Prairies permanentes

Prairies temporaires

Mais grain et ensilage

Divers

Orge

Autres céréales

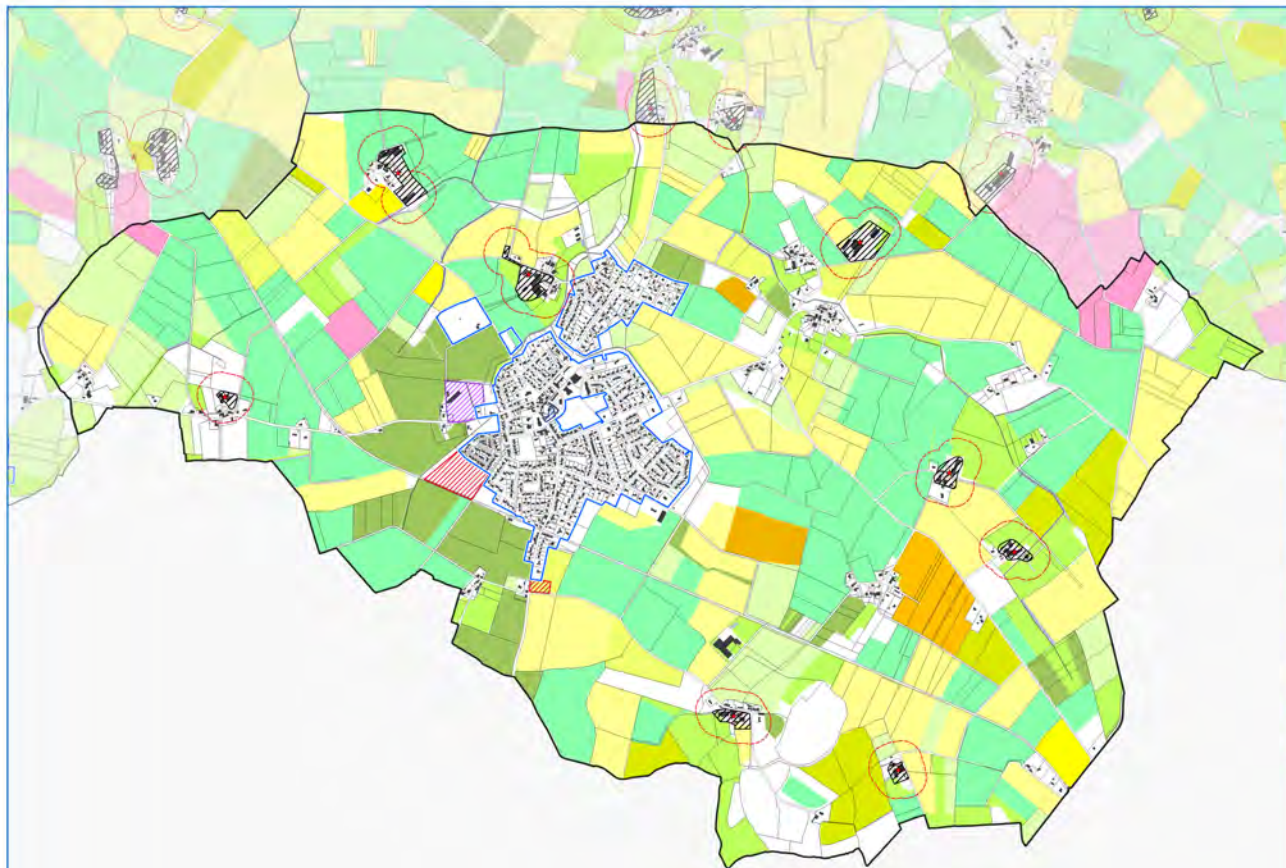
Colza




















Tournesol

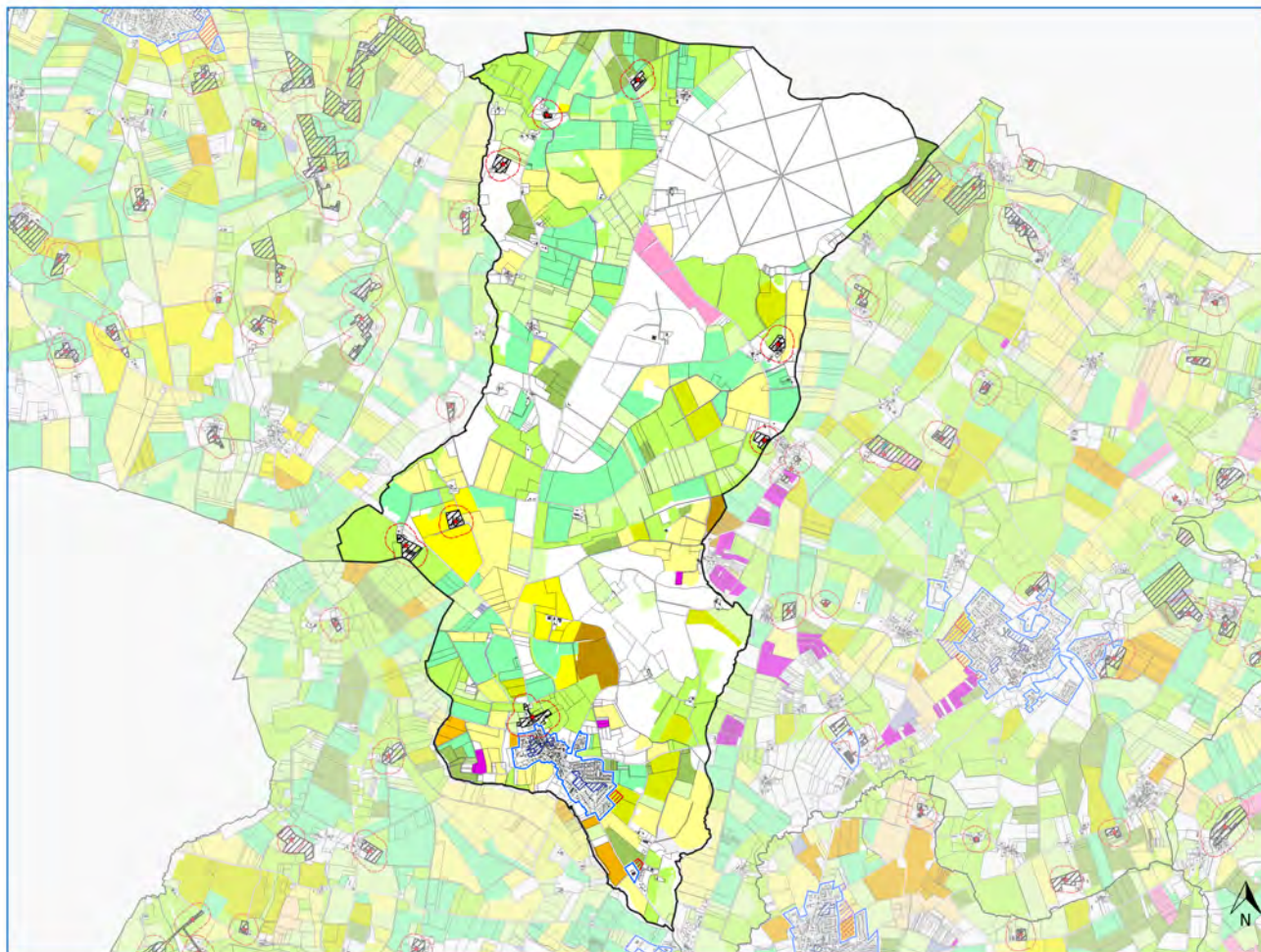
Autres oléagineux


























Protéagineux

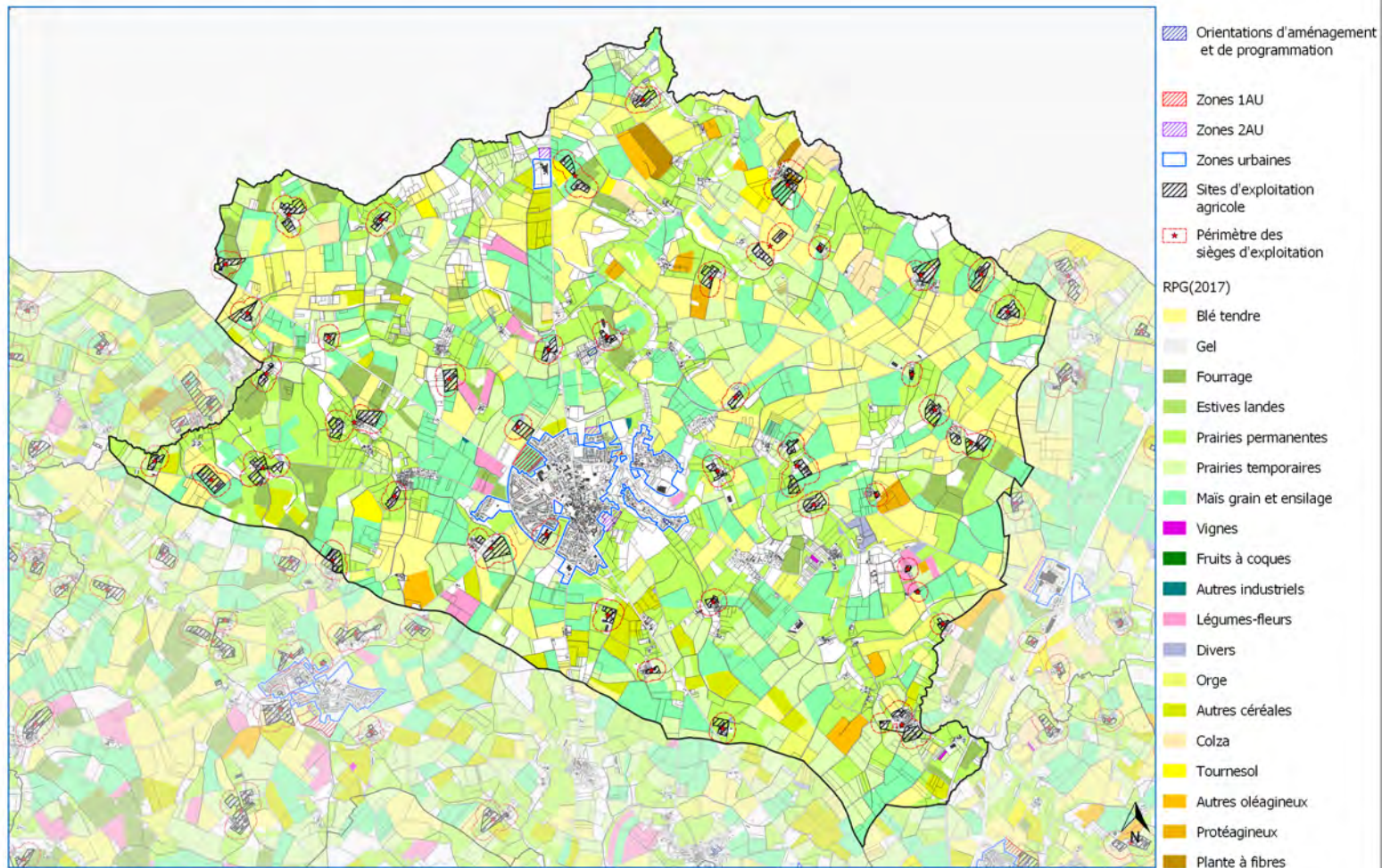
Plante à fibres



-  Orientations d'aménagement et de programmation
-  Zones 1AU
-  Zones 2AU
-  Zones urbaines
-  Sites d'exploitation agricole
-  Périmètre des sièges d'exploitation
- RPG(2017)**
-  Blé tendre
-  Gel
-  Fourrage
-  Prairies permanentes
-  Prairies temporaires
-  Maïs grain et ensilage
-  Légumes-fleurs
-  Divers
-  Orge
-  Autres céréales
-  Tournesol
-  Autres oléagineux
-  Protéagineux



-  Orientations d'aménagement et de programmation
-  Zones 1AU
-  Zones 2AU
-  Zones urbaines
-  Sites d'exploitation agricole
-  Périmètre des sièges d'exploitation
- RPG(2017)
-  Blé tendre
-  Gel
-  Fourrage
-  Estives landes
-  Prairies permanentes
-  Prairies temporaires
-  Maïs grain et ensilage
-  Vignes
-  Fruits à coques
-  Autres industriels
-  Légumes-fleurs
-  Divers
-  Orge
-  Autres céréales
-  Colza
-  Tournesol
-  Autres oléagineux
-  Protéagineux
-  Plante à fibres



Orientations d'aménagement et de programmation

Zones 1AU

Zones 2AU

Zones urbaines

Sites d'exploitation agricole

Périmètre des sièges d'exploitation

RPG(2017)

Blé tendre

Gel

Fourrage

Estives landes

Prairies permanentes

Prairies temporaires

Mais grain et ensilage

Vignes

Fruits à coques

Autres industriels

Légumes-fleurs

Divers

Orge

Autres céréales

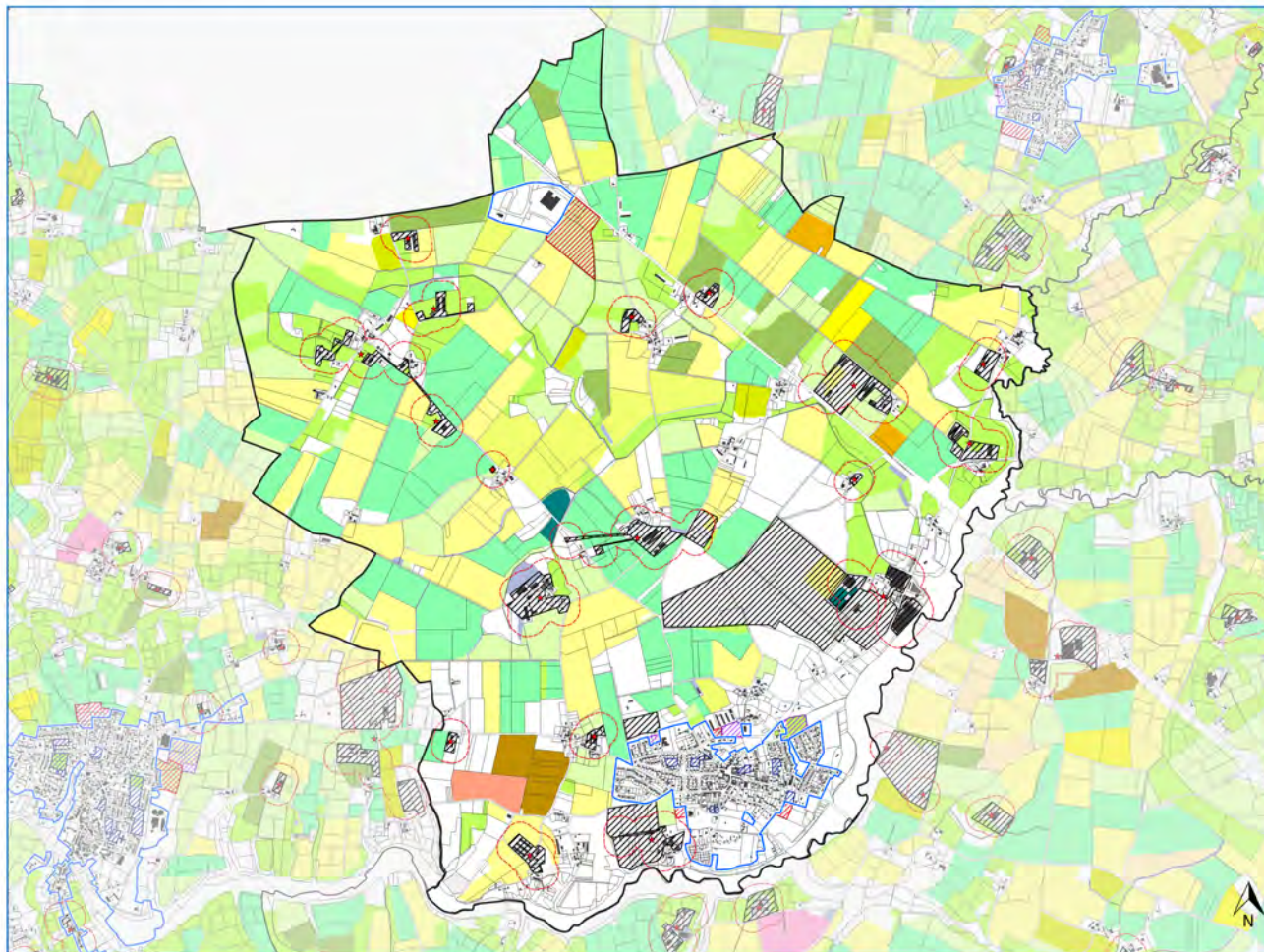
Colza

Tournesol

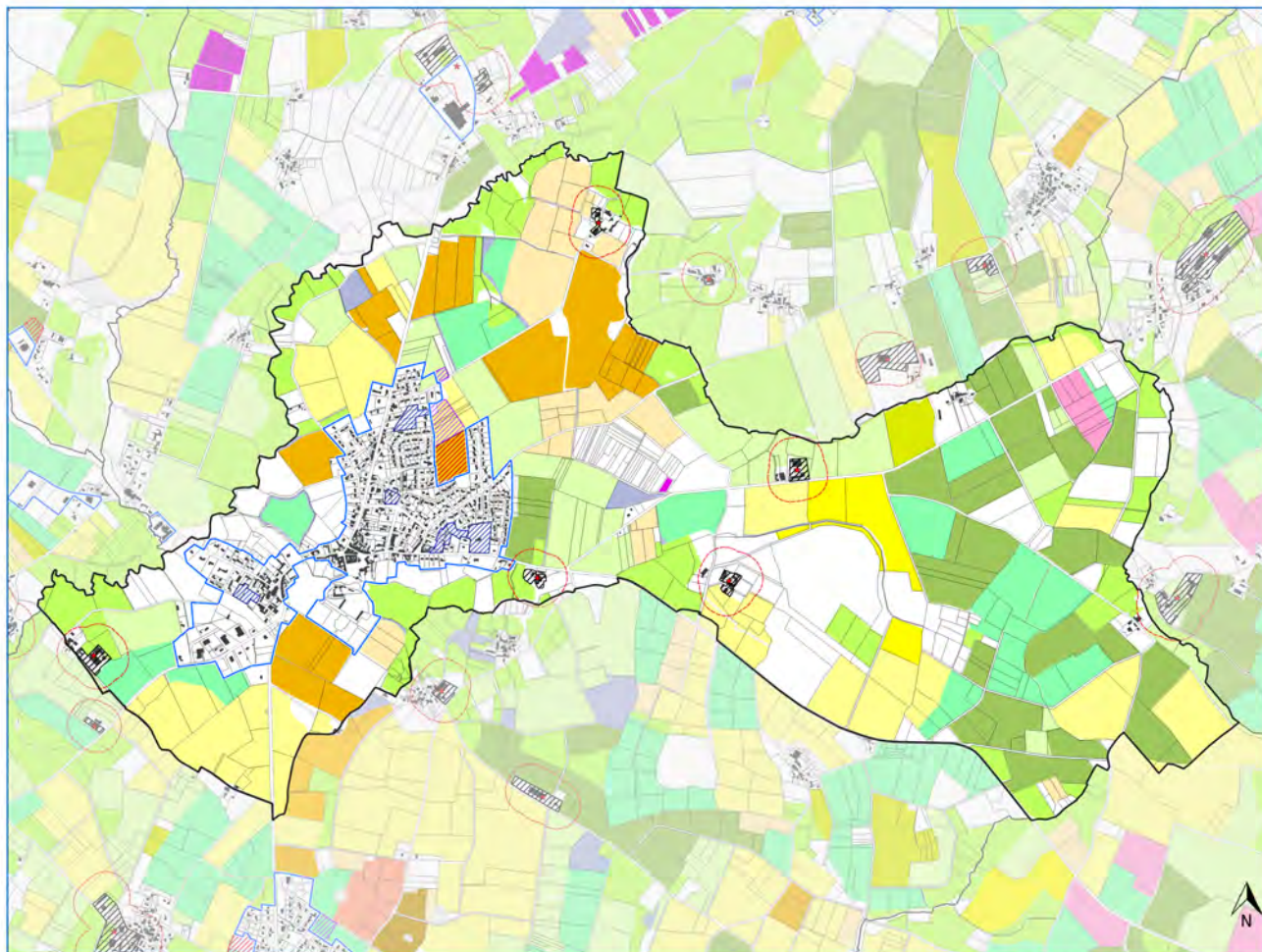
Autres oléagineux


Protéagineux


Plante à fibres



- Orientations d'aménagement et de programmation
- Zones 1AU
- Zones 2AU
- Zones urbaines
- Sites d'exploitation agricole
- Périmètre des sièges d'exploitation
- RPG(2017)**
- Blé tendre
- Gel
- Légumineuses à grain
- Fourrage
- Prairies permanentes
- Prairies temporaires
- Maïs grain et ensilage
- Autres industriels
- Légumes-fleurs
- Divers
- Orge
- Autres céréales
- Colza
- Tournesol
- Protéagineux
- Plante à fibres





 Orientations d'aménagement et de programmation

 Zones 1AU


 Zones 2AU

 Zones urbaines

 Sites d'exploitation agricole


 Périmètre des sièges d'exploitation


RPG(2017)


 Blé tendre


 Gel

 Légumineuses à grain


 Fourrage

 Prairies permanentes

 Prairies temporaires

 Maïs grain et ensilage

 Vignes


 Légumes-fleurs

 Divers

 Orge


 Autres céréales

 Colza

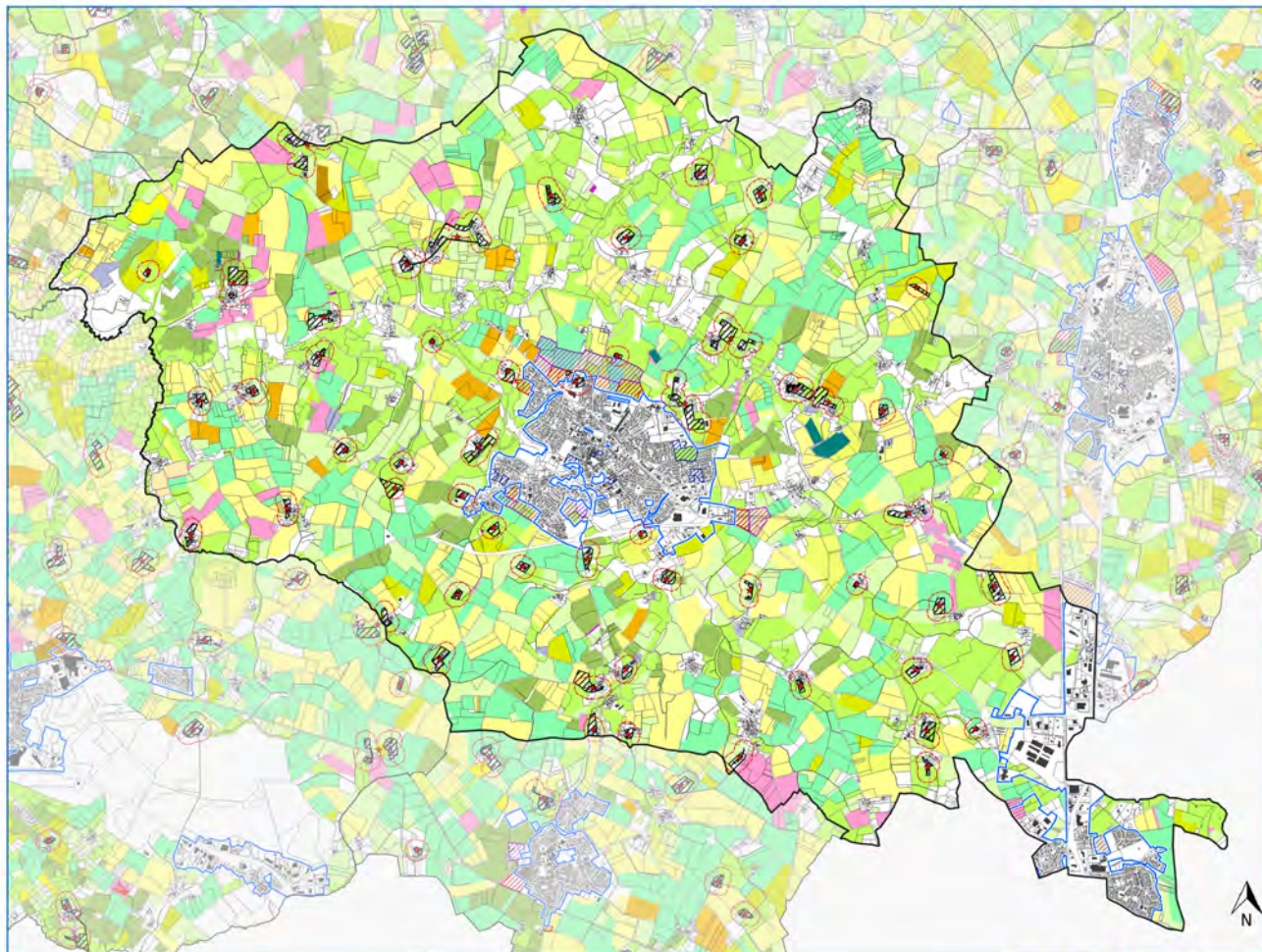
 Tournesol


























 Autres oléagineux

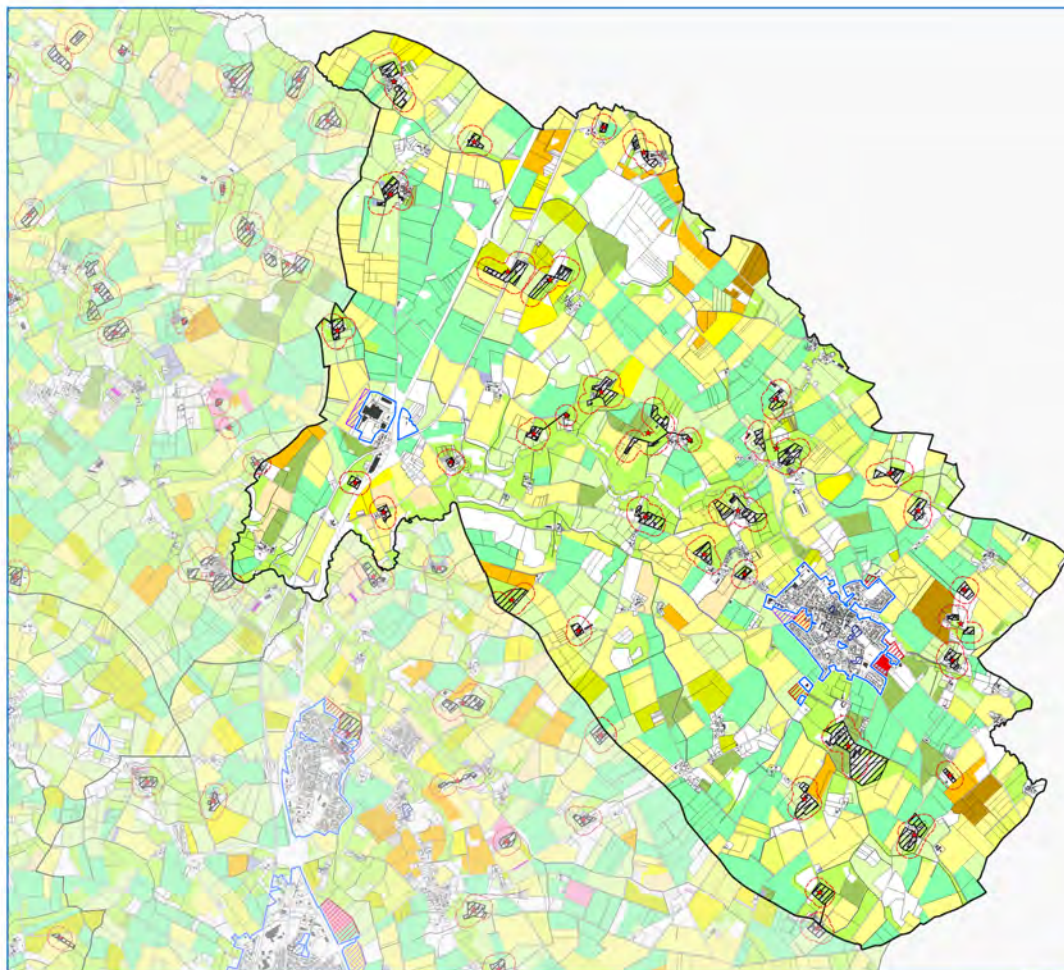
 Protéagineux


 Plante à fibres







-  Orientations d'aménagement et de programmation
-  Zones 1AU
-  Zones 2AU
-  Zones urbaines
-  Sites d'exploitation agricole
-  Périmètre des sièges d'exploitation
- RPG(2017)
-  Blé tendre
-  Gel
-  Fourrage
-  Estives landes
-  Prairies permanentes
-  Prairies temporaires
-  Maïs grain et ensilage
-  Vergers
-  Vignes
-  Autres industriels
-  Légumes-fleurs
-  Divers
-  Orge
-  Autres céréales
-  Colza
-  Tournesol
-  Autres oléagineux
-  Protéagineux
-  Plante à fibres





 Orientations d'aménagement et de programmation

 Zones 1AU


 Zones 2AU

 Zones urbaines

 Sites d'exploitation agricole

 Périmètre des sièges d'exploitation

RPG(2017)

 Blé tendre

 Gel

 Fourrage

 Estives landes

 Prairies permanentes

 Prairies temporaires

 Mais grain et ensilage


 Vergers

 Vignes

 Légumes-fleurs


 Divers

 Orge


 Autres céréales

 Colza

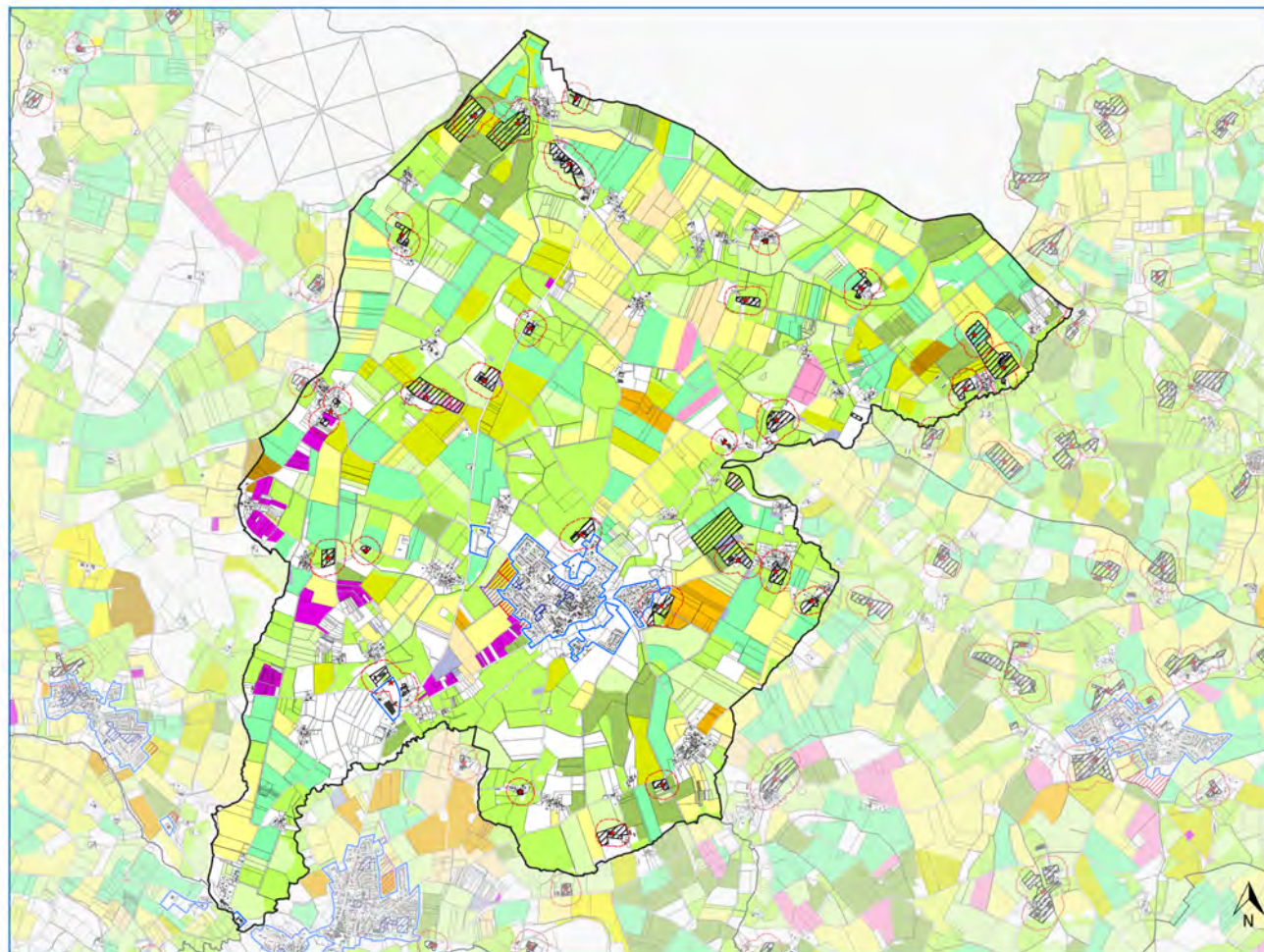
 Tournesol


























 Autres oléagineux

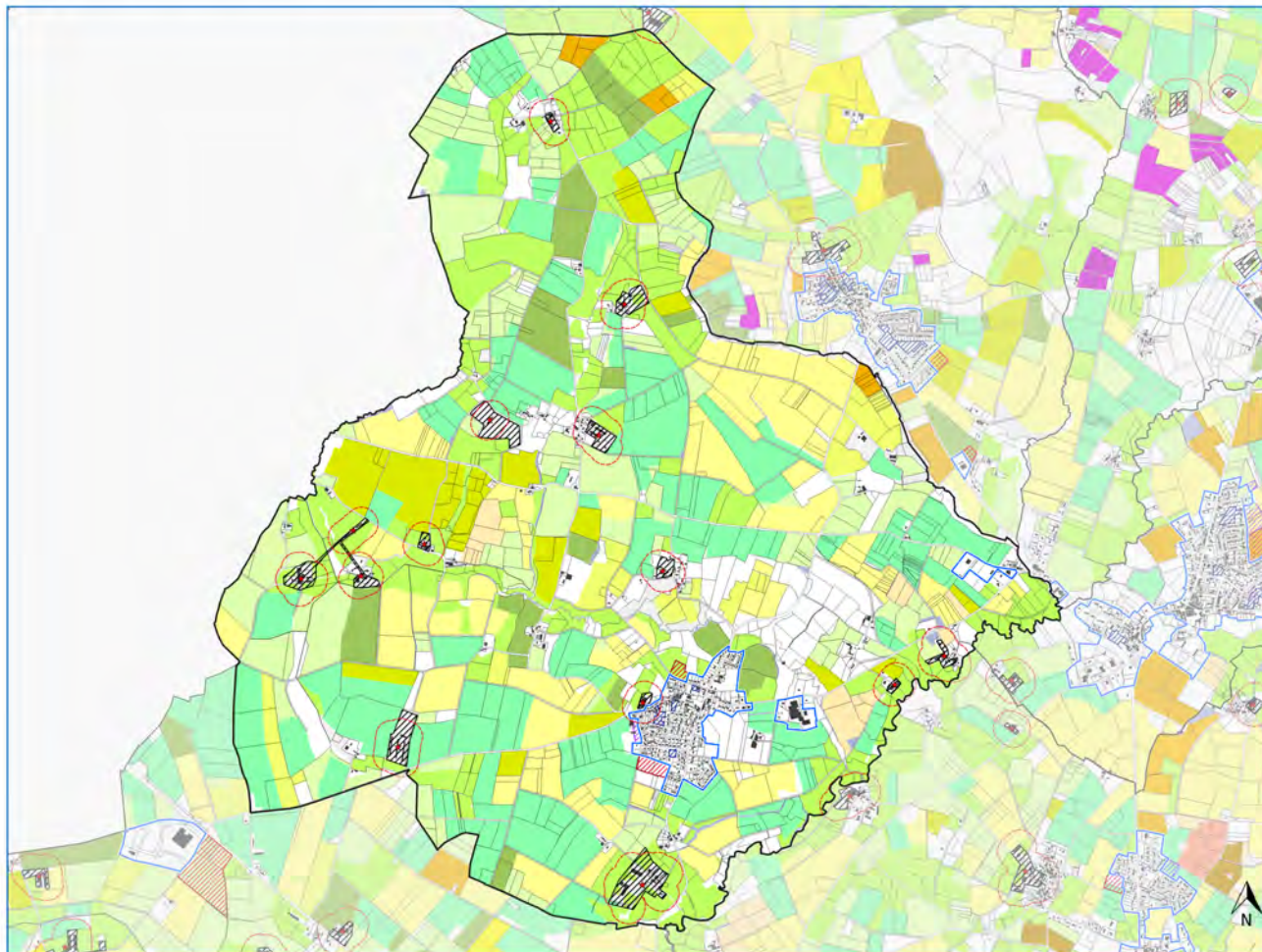
 Protéagineux




















 Plante à fibres





-  Orientations d'aménagement et de programmation
 -  Zones 1AU
 -  Zones 2AU
 -  Zones urbaines
 -  Sites d'exploitation agricole
 -  Périmètre des sièges d'exploitation
- RPG(2017)
-  Blé tendre
 -  Gel
 -  Fourrage
 -  Estives landes
 -  Prairies permanentes
 -  Prairies temporaires
 -  Maïs grain et ensilage
 -  Vignes
 -  Fruits à coques
 -  Autres industriels
 -  Légumes-fleurs
 -  Divers
 -  Orge
 -  Autres céréales
 -  Colza
 -  Tournesol
 -  Autres oléagineux
 -  Protéagineux
 -  Plante à fibres



-  Orientations d'aménagement et de programmation
-  Zones 1AU
-  Zones 2AU
-  Zones urbaines
-  Sites d'exploitation agricole
-  Périmètre des sièges d'exploitation
- RPG(2017)
-  Blé tendre
-  Gel
-  Légumineuses à grain
-  Fourrage
-  Prairies permanentes
-  Prairies temporaires
-  Maïs grain et ensilage
-  Vignes
-  Divers
-  Orge
-  Autres céréales
-  Colza
-  Tournesol
-  Autres oléagineux
-  Protéagineux
-  Plante à fibres